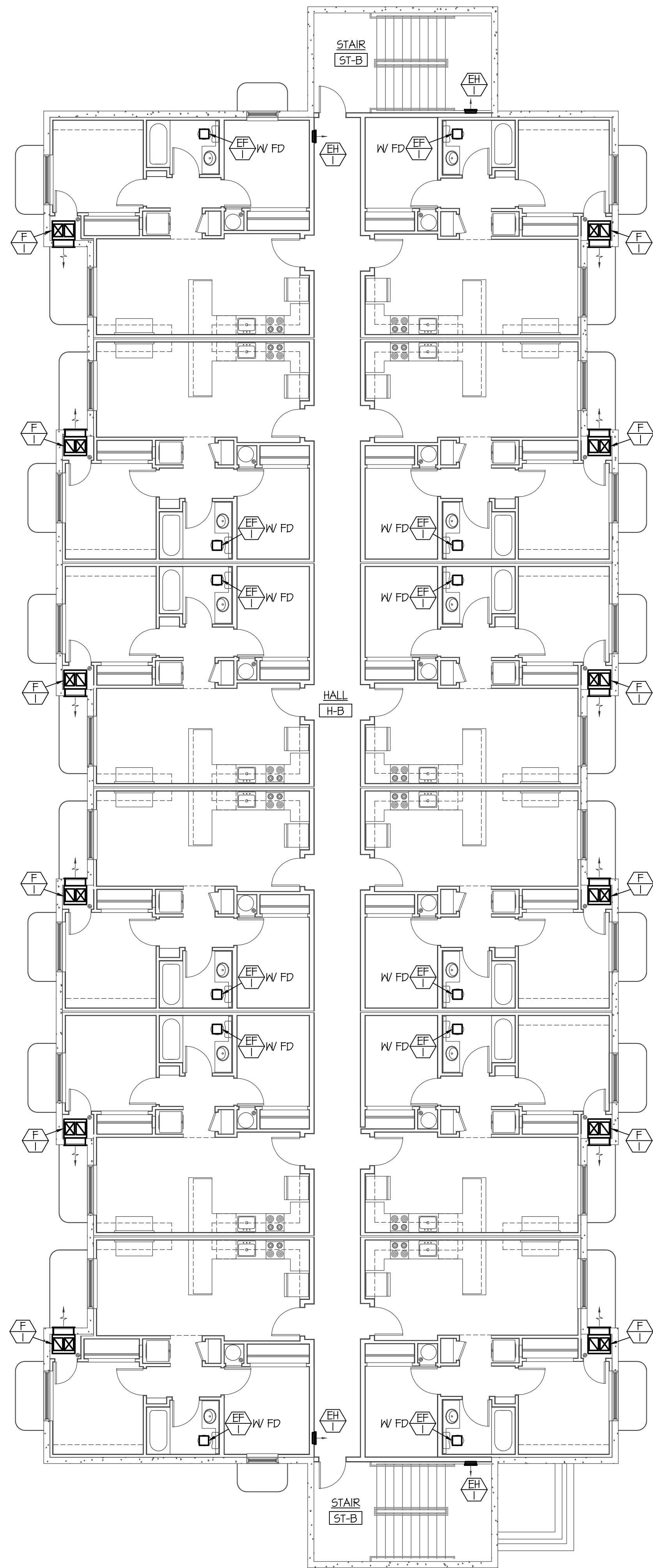


F:\17042 JUNIPER SANDS APTS\17042 M1.3.dwg Jun 19, 2017 3:26pm



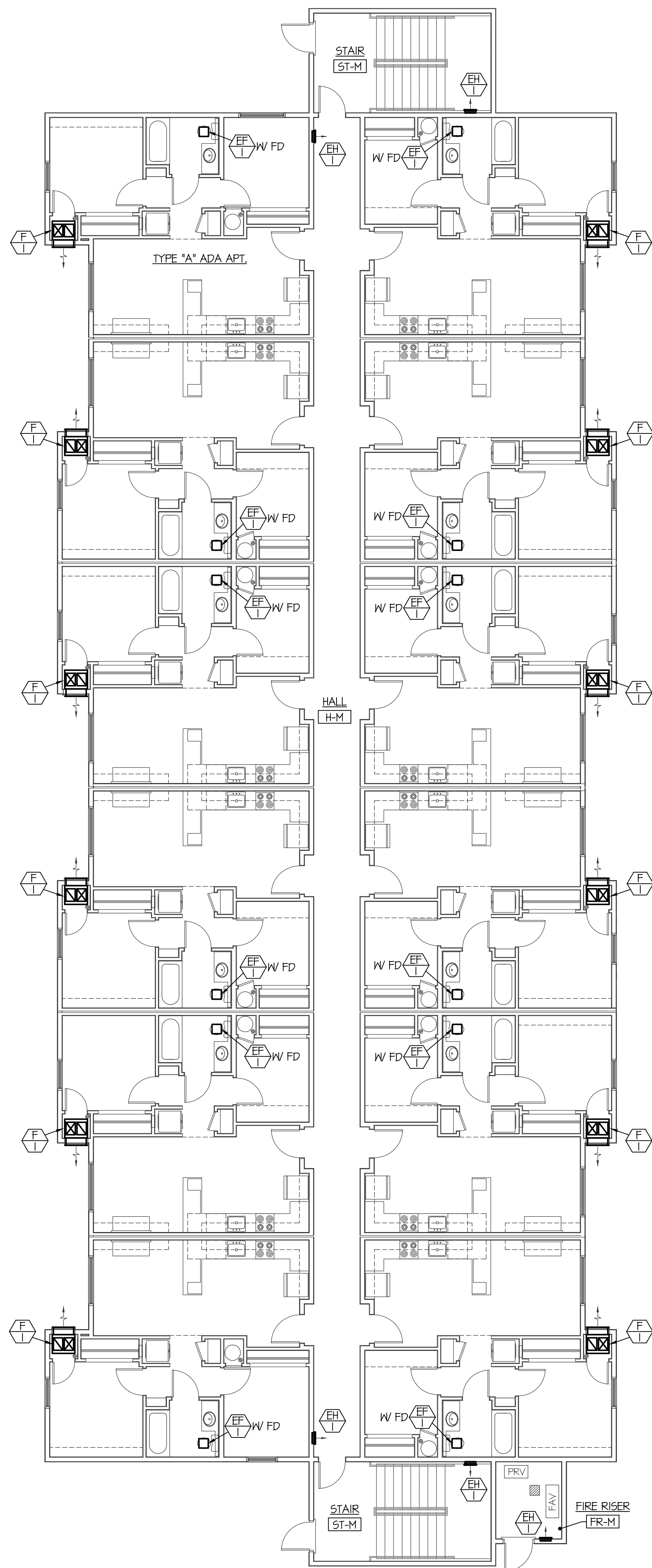
BLDG. 2 BASEMENT MECH. FLOOR PLAN

SCALE: 1/8" = 1'-0"



NOTE:

SEE TYPICAL APT. LARGE SCALE MECHANICAL FLOOR PLANS ON SHEET M2.0 FOR DUCTWORK AND EQUIPMENT LOCATED IN EACH APT.



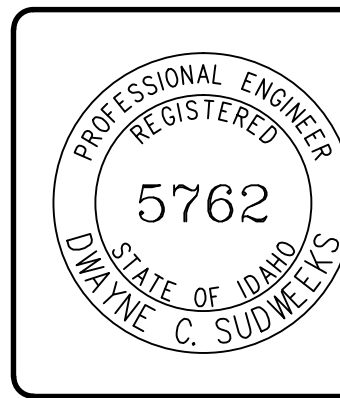
BLDG. 2 MAIN FLOOR MECH. PLAN

SCALE: 1/8" = 1'-0"

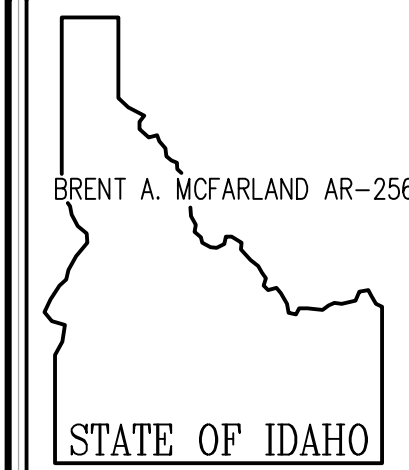


PLAN NOTES:

ORIGINAL DRAWING SIGNED BY: DWAYNE C. SUDWEEKS
DATE ORIGINAL SIGNED: Jun 19, 2017
ORIGINAL ON FILE AT ENGINEERED SYSTEMS ASSOCIATES
1355 EAST CENTER, POCA TELLO, IDAHO 83201



Engineered Systems Associates
1355 EAST CENTER
POCA TELLO, IDAHO 83201
PHONE: (208) 233-0501
FAX: (208) 233-0529
EMAIL: eso@engsystems.com
ESA JOB NUMBER: 17042



BRENT A. MCFARLAND AR-2561
JRW & ASSOCIATES
1152 BOND AVENUE - SUITE A REIDBURG, IDAHO 83440
WWW.JRW.COM VOICE (208) 359-2271 FAX (208) 359-2271

CONSULTANTS:

PROJECT: **JUNIPER SANDS APARTMENTS** IDAHO
REIDBURG, IDAHO
DRAWING TITLE: **BLDG. 2 - BASEMENT & MAIN LEVEL MECH. PLANS**

REVISION:		
#	DATE	COMMENT
1	SR	694
2	DCS	JUNE 2017

PLOT DATE:
DRAWING NO. **M1.3**
FILE: 17042 M1.3.dwg
OF -